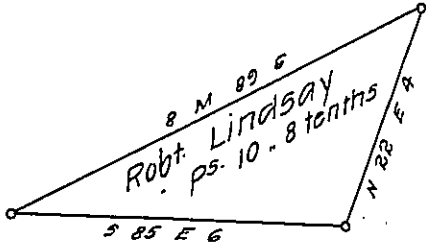


FORM NO. 1.

York County Shore.



Lancaster County Shore.

A Draught of Huckelberry Island situate in the township of Drumore in the County of Lancaster West of Mitchells deep north of Cove Island east of Hares Island opposite to lands of ——— Smith on the east and Jacob Balmer on west, containing ten perches and eight tenths neat measure surveyed in pursuance of a warrant dated the 25th day of September A. D. 1818 granted to Robert Lindsay.

pr. Jacob Hibshman D.S.

To Jacob Spangler Esqr.
Surveyor General.

IN TESTIMONY that the above is a copy of the original remaining on file in the Department of Internal Affairs of Pennsylvania, made conformably to an Act of Assembly approved the 16th day of February 1833, I have hereunto set my hand and caused the Seal of said Department to be affixed at Harrisburg, this third day of January 1908

Henry Howell
Secretary of Internal Affairs.